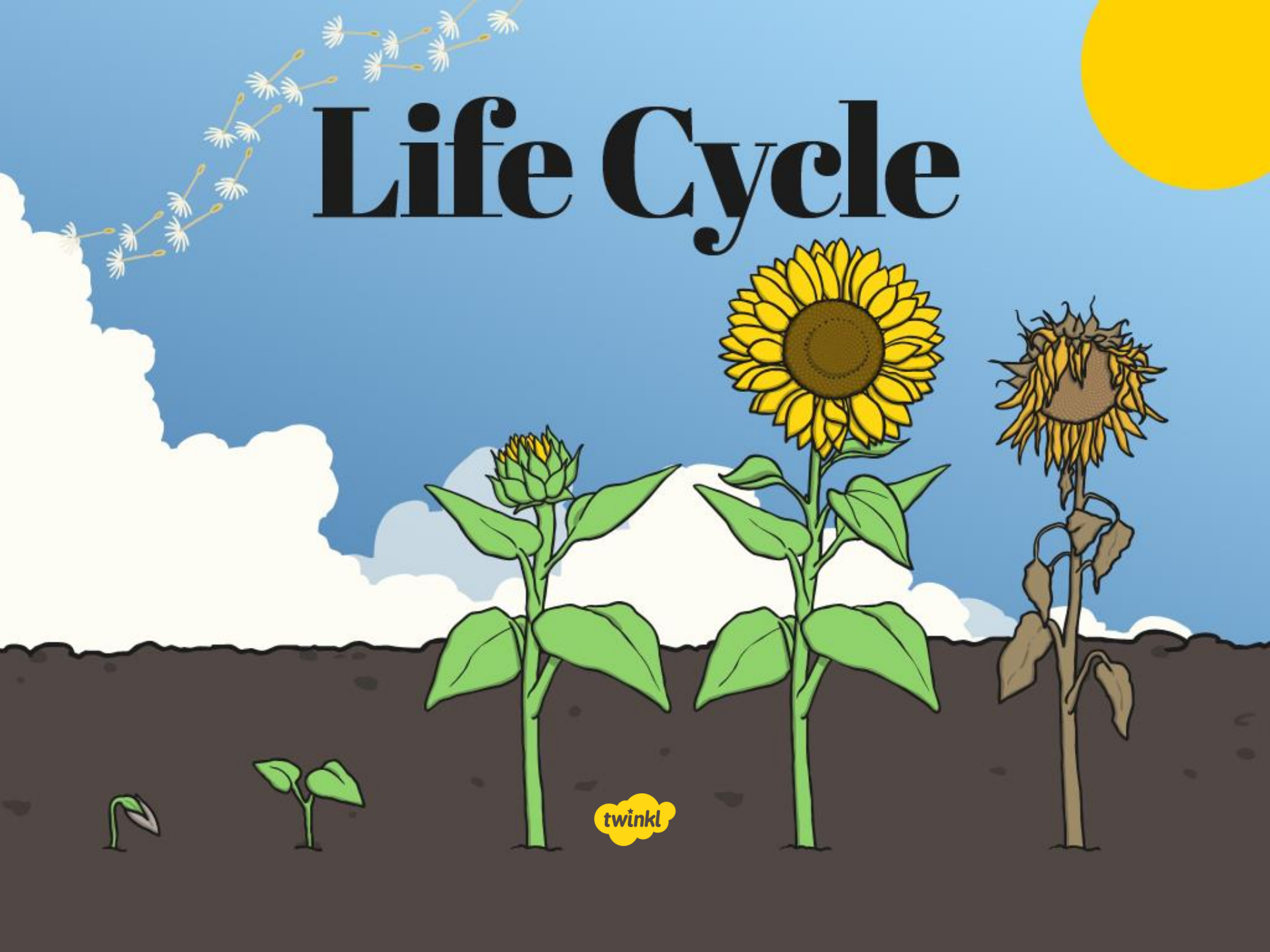


# Life Cycle



# Life Cycle of a Flowering Plant

The life cycle of a flowering plant shows the changes that happen to the plant over the course of its lifetime.

The main stages of the life cycle of a flowering plant are:

**1**

Germination

**2**

Growing and  
flowering

**3**

Pollination

**4**

Fertilisation  
and seed  
formation

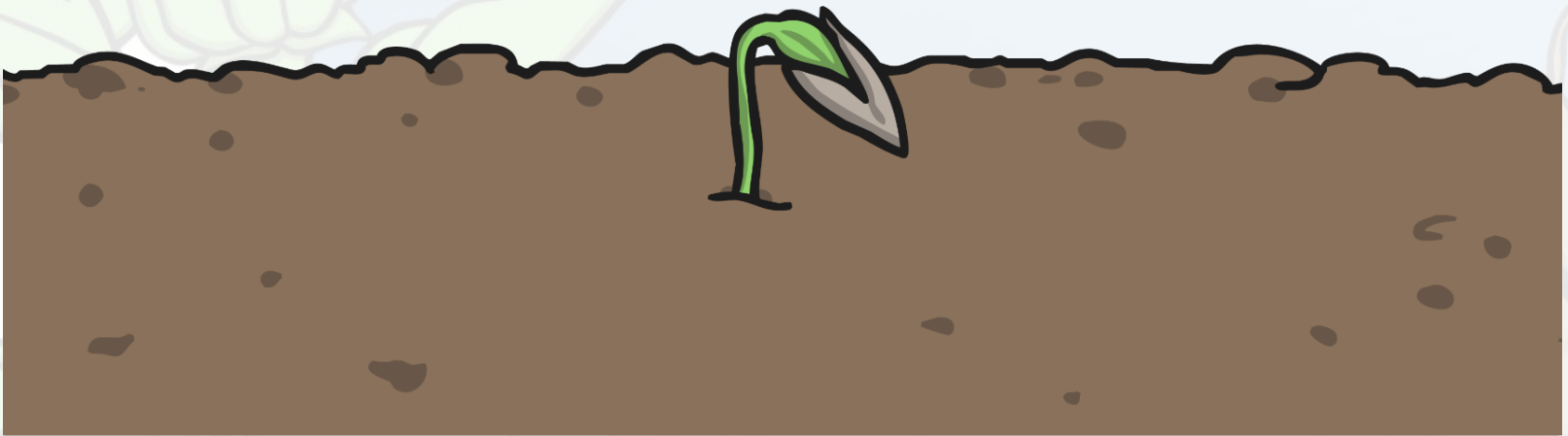
**5**

Seed  
dispersal

Let's find out more about what happens at each stage!

# Germination

Germination is when a seed begins to grow.



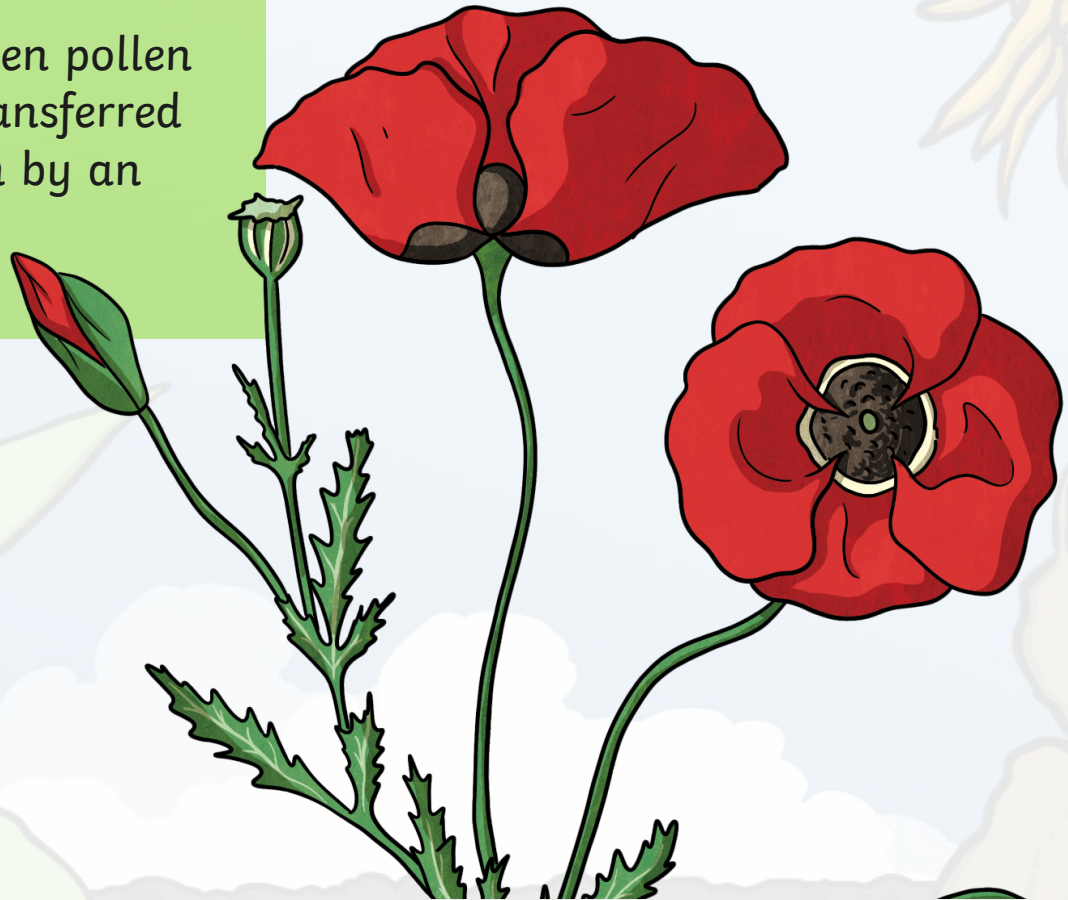
# Growing and Flowering

Once the seed has germinated the plant grows bigger and then forms flowers.

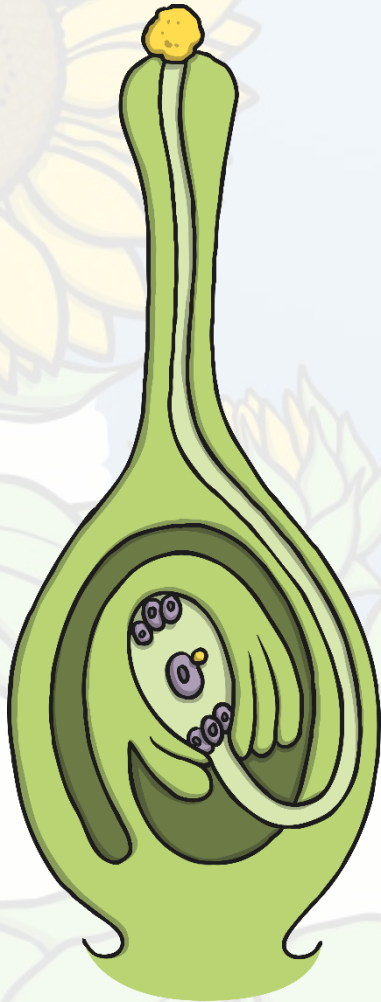


# Pollination

Pollination occurs when pollen from the anther is transferred to the stigma, often by an insect.

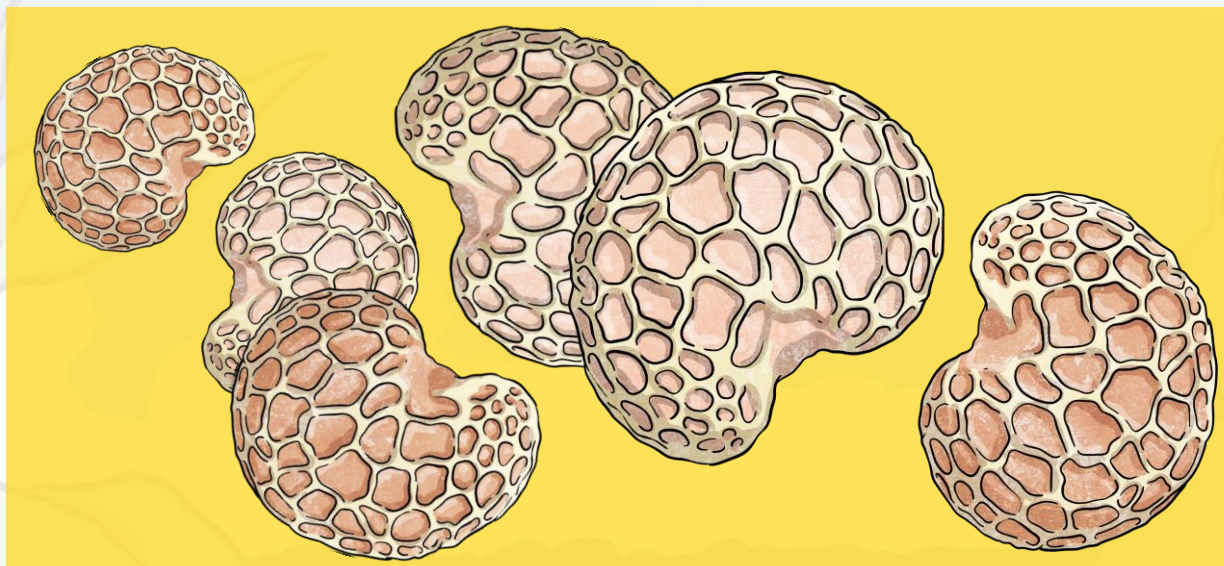


# Fertilisation and Seed Formation



Fertilisation happens when the pollen travels from the stigma down the style to the ovary.

The pollen joins with an ovule to form a seed.  
The seed forms inside the ovary.



# Seed Dispersal



Once the seeds are fully formed, the plant needs to disperse them.

This means that the plant needs to move or transport the seeds away from the parent plant in some way so that they don't all try to grow in the same place.

There are lots of different ways that seeds can be dispersed.

# Seed Dispersal

Seeds can be dispersed by:

