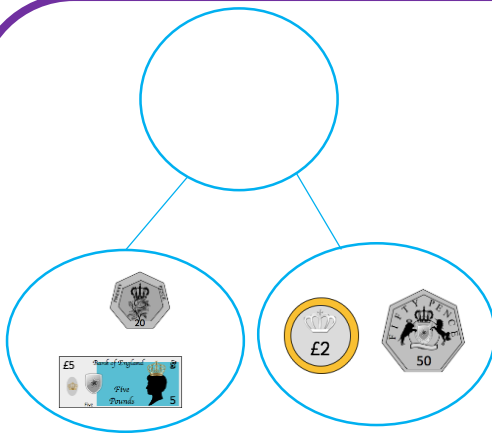


Find the total amount.



£____ and ____ p + £____ and ____ p

There is £____ and ____p.

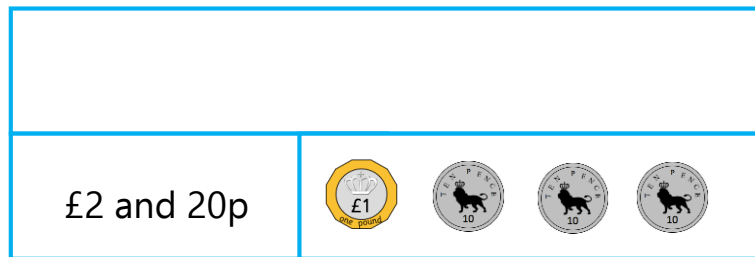
Altogether there is £____ and ____p.

Use this method to calculate:

£2 and 10p and £1 and 40p

£1 and 30p and £5 and 20p

What calculation does the bar model show?



Draw a bar model to show:

£2 and 30p and £3 and 50p

Find the total costs. Choose your method of working

A train cost £3 and 20p.

A cube cost £5 and 20p.

How much do they cost altogether?

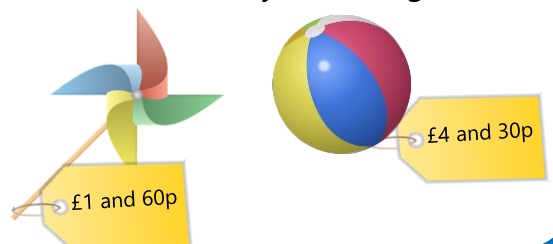


out.

A windmill cost £1 and 60p.

A ball cost £4 and 30p.

How much do they cost altogether?



Rosie bought these ice-creams.



Ice-creams cost 20p each.
How much did Rosie spend?

Esin bought twice as many ice-creams as Rosie.

How many ice-creams did Esin buy?

How much money did Esin spend on ice-creams?

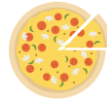


Zach has £10.

Has he got enough money to buy
a t-shirt and a cupcake?



£8 and 60 p



90 p



£5 and 30

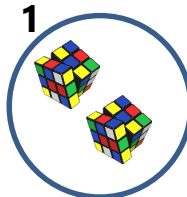
p



50 p

What combinations of items can he buy with
£10?

1



2



3

